

Studebaker

SERVICE BULLETIN

OCTOBER

NO. 209



1948

VALVE SPRING CHAMBER OIL BAFFLES - CHAMPION TYPE ENGINES

Please record this article on p. 91 of your 1947 Shop Manual.

An oil baffle plate, Part No. 525265, is available for Champion-type engines to prevent excessive oil splash in the valve spring chamber and thus reduce oil loss through the crankcase breather tube and the valve ports and reduce possibility of oil entering the combustion chamber through the intake valve and fouling spark plugs.

Two baffles are required for installation in an engine, one baffle to be placed in each half of the valve spring chamber straddling the valve lifters.

Insert the new baffle into the valve chambers so that the curved portion is upward and the flat surface next to the cover plate. When the cover plate is reinstalled, these baffles are held tightly in place against the cover by the cover mounting screws.

These baffles are not a cure for conditions of excessive oil consumption, but are a prevention for such consumption through oversplash in the valve spring chamber. Piston clearances, condition of the piston rings, and cylinder bores, also must still be diagnosed and any such abnormal conditions corrected.

SOURCES FOR GLASS REPLACEMENT, BODY AND WINDSHIELD

Below is a reprint of Parts Department Letter to Dealers No. 989 of August 19, 1948.

Because of its fragile nature, Studebaker Dealers procured their replacement glass locally under arrangements made by the factory.

Certain complexities, however, made it impossible until recently to provide this service on the "curved" type of glass.

You will be pleased to know that the Pittsburgh Plate Glass Company and the W. P. Fuller Company are now in a position to furnish replacements of "curved" glass from any of their locations as listed in your Studebaker Parts Price List.

You should, therefore, procure all your replacement glass locally since none will be

In this issue

	PAGE
CAB BACK PANEL REINFORCEMENT - 2R	3
EARLY CUT-IN GENERATOR - 6G,7G; 14A,15A	2
GLASS REPLACEMENT - ALL MODELS	1
OAKITE No. 70 FOR CAR WASHING	4
PROPELLER SHAFT SUPPORT PARTS CHANGES - 2R10,2R15,2R16,2R17	3
REBOUND SPRING CLIPS WITH RUBBER INSERTS - 7G,15A	1
2R SERIES COLOR FORMULAS	2
VALVE SPRING CHAMBER OIL BAFFLES - ALL CHAMPION-TYPE ENGINES	1

stocked at the factory or any of its Parts Depots.

Windshield glass and frames as assemblies and window glass and lift channels as assemblies will, likewise, no longer be carried by Studebaker Parts Depots. Frame and lift channels (without glass) are available as usual under their proper parts numbers.

NOTE.--Export dealers may order from The Studebaker Export Corporation

RUBBER INSERTS IN NEW REAR SPRING REBOUND CLIPS - 7G, 15A

Rear spring rebound clips which incorporate the use of rubber inserts are now available for service replacement use whenever rear springs are disassembled. The rubber insert acts as a sound deadener and also prevents undue side movement of the spring leaves in the rebound clip. Old clips must be removed before the new clips are installed.

Parts are available from your nearest depot as follows:

NO. PER CAR	MODEL	PART NO.	PART NAME
4	7G	524912	Rear Spring Rebound Clip Assembly
4	7G - Extra Leaf Equip.	524913	Rear Spring Rebound Clip Assembly
4	15A	524934	Rear Spring Rebound Clip Assembly
4	15A - Extra Leaf Equip.	524935	Rear Spring Rebound Clip Assembly

EARLY CUT-IN GENERATORS FOR 6G-7G CHAMPIONS AND 14A-15A COMMANDERS

Please record this article on page 80 of your 1947 Shop Manual.

An early cut-in type of generator is available for installation in cars used in such service as taxicabs, doctor's cars, and other service where it is desirable that the generator reach its peak out-put at lower speeds than is required in normal pleasure driving.

The early cut-in type generator is not to be confused with the high out-put or "heavy duty" generator announced in Service Bulletin No.203, page 3, which is used where two-way radio or other equipment places abnormal current drain upon the battery.

The early cut-in type generator does not deliver any higher peak output than the standard production generator, but it does reach its out-put peak at lower engine speeds.

Parts required for installation of the early cut-in type generator are available from the Parts and Accessories Division, South Bend. There is no exchange price allowed on installation of this type of special equipment.

PART NO.	PART NAME	ALL 6G-7G	ALL 14A-15A
524800	Generator mounting adaptation drawing	*	
198881	Generator & drive pulley assembly	1	
675237	Generator rear support bracket & bolt assembly	1	
195772	Generator support front bolt spacer	1	
524869	Generator adjusting arm	1	
1-0512	Generator adjusting arm to generator screw	1	
361-05	Generator adjusting arm to generator plain washer	1	
2-0532	Generator support front bolt	1	
252-05	Generator support front bolt lock nut	2	
198882	Generator voltage regulator assembly	1	
660845	Generator voltage regulator resistance unit #11	1	
660844	Generator voltage regulator resistance unit #60	1	
677233	Generator & drive pulley assembly		1
524898	Generator rear support bracket		1
676065	Generator front support spacer		1
676059	Generator adjusting arm		1
1-0514	Generator adjusting arm to cylinder screw		1
1-0512	Generator adjusting arm to generator screw		1

PART NO.	PART NAME	ALL 6G-7G	ALL 14A-15A
198882	Generator voltage regulator assembly		1
660845	Generator voltage regulator resistance unit #11		1
660844	Generator voltage regulator resistance unit #60		1

TRUCK SERVICE ITEMS

1949 MODEL TRUCK COLOR FORMULAS

Below is a reprint of Truck Service Letter No. 82 which may now be discarded from your files.

Below are listed the paint numbers, names, paint symbols, and ingredient formulas of the standard production colors used on the 1949 Model trucks.

#7927 CHEROKEE RED BAKING ENAMEL, SYMBOL VAA &
#8240 CHEROKEE RED INFRA-RED BAKING ENAMEL, SYMBOL W-UB

Toluidine Red Light	55%
Toluidine Red Deep	45
	<u>100%</u>

#8226 CUBAN TAN BAKING ENAMEL, SYMBOL W-TX

Rutile Titanium Dioxide	74.10% (By weight)
Burnt Italian Sienna	20.75
Indian Red	2.65
Lamp Black	2.50
	<u>100.00%</u>

#8179 IROQUOIS BLUE BAKING ENAMEL, SYMBOL W-TR

Pigment Composition	Vehicle Composition
Titanium Dioxide	57% Melamine 10%
Milori Blue	8 Medium Oil Length
Monstral Blue	4 /alkyd resin 90
Ferrite Yellow	20 <u>100%</u>
Lamp Black	7
Red Oxide	4
	<u>100%</u> Solids = 44%

#8177 MELODY BLUE BAKING ENAMEL, SYMBOL W-TP

Pigment Composition	Vehicle Composition
Chinese Blue	75% Melamine 10%
Titanium Dioxide	16% Medium Oil Length
Zinc Chromate	7 /alkyd resin 90
Lamp Black	2 <u>100%</u>
	<u>100%</u> Solids = 44%

#8230 Chrome Yellow Baking Enamel, Symbol W-TZ

Chrome Yellow	15.9%
Alkyd Resin Solution	55.0%
Melamine	2.0
Volatile	27.1
	<u>100.0%</u>

#8231 Clover Green Baking Enamel, Symbol W-UA

Phthalocyanine Blue	1.7%
Chrome Yellow	5.3
Alkyd Resin Solution	65.5
Melamine	2.9
Volatile	24.6
	<u>100.0%</u>

REINFORCING CAB BACK PANEL TO FLOOR PAN - 2R SERIES

Below is a reprint of Truck Service Letter No. 83, which may now be discarded from your files.

If any separation of the cab back panel from the floor pan along the rear lower edge of 1949 Model truck cabs is noticed, welding should not be attempted because of the proximity of the gasoline tank.

The condition should be corrected by drilling a 17/64" hole at the center point of each separation and installing the following parts:

<u>QTY.</u>	<u>PART NO.</u>	<u>PART NAME</u>
1	13X503	1/4 - 20X5/8 Bolt
1	20X81	1/4 - Nut
1	380-04	Lockwasher
1	361-04	Plain Washer

The accompanying drawing shows details of installation. Note that the centers of the bolt holes are punched 5/16" above the bottom edge of the cab back panel before drilling.

If you have any trucks on hand with serial numbers prior to R5-002601, R10-00912, R15-001270, R16-003386, or R17-001333, a careful inspection should be made to determine if there is any separation at this point so that correction can be made before the truck is placed in service.

PARTS CHANGES IN PROPELLER SHAFT SUPPORT ASSEMBLY - 2R10, 2R15, 2R16, 2R17

Below is a reprint of Truck Service Letter No. 84, which may now be discarded from your files.

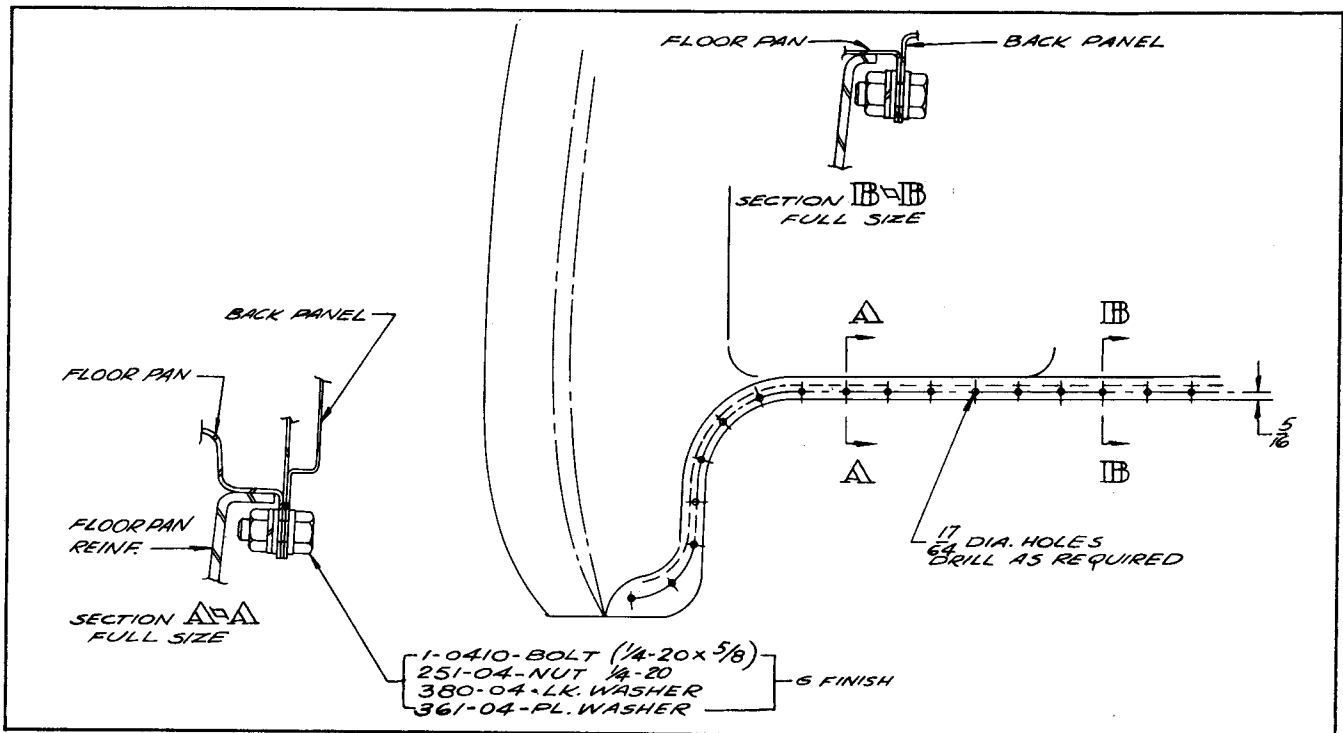
Three parts changes to improve alignment of the propeller shaft support bearing assembly have been made in production.

CHANGE NO. 1

The new cushion, Part No. 678651, now has a 1/4" shoulder or rib on the rear side. The new propeller shaft support, Part No. 678652, is narrower, the radius on the forward side reduced, and the size of the bore increased to 3.465" to 3.475".

Only the new parts will be carried by your parts depot after service stock of the old part, No. 677877, Support Bearing Cushion, is used up.

(Continued on page 4)



The new support with the larger bore started production with the following truck serial numbers:

R10-001013	R15-31-001446
R16-31-003669	R17-31-001441
R16-55-003661	R17-55-001435
R16-71-003666	R17-71-001436
R16-95-003762	R17-95-001434

Should the propeller shaft support on early production trucks creep out of line causing either the rubber cushion or support to rub the dust shield, the new support, Part No. 678652, having a bore of 3.465" to 3.475" should be installed.

If, in the event of an emergency, it is necessary to use the old (No. 677876) support, or the early production (No. 678652) support, they can be placed in a lathe and the bore machined to 3.465" to 3.475".

CHANGE NO. 2

New lower and upper propeller shaft support to frame cushions have been provided for service. The new lower cushion has a 7/32" high shoulder, while the new upper cushion is a plain, flat, rubber cushion. The higher shoulder of the lower cushion permits firmer location of the cushion in the propeller shaft support and reduces possibility of misalignment in the support itself.

The new parts will be packaged and shipped under Part No. 678676 and will include one Part No. 678233, Upper Cushion, and one Part No. 678234, Lower Cushion. *Two packages will be needed for each propeller shaft support serviced.*

The new type support to frame cushions entered production with the following truck serial numbers: R10-001534, R15-002062, R16-005247, R17-001923.

CHANGE NO. 3

The length of the intermediate propeller shaft on trucks having three sections to the drive line has been changed from 41-9/16" to 41-3/8". Should cases of propeller shaft support misalignment be traceable to the intermediate propeller shaft, the condition can be corrected by cutting back the shoulder on a lathe 3/16" while maintaining the bearing I. D. of 1.3779" to 1.3784".

The 41-9/16" propeller shaft will no longer be used and only the 41-3/8" propeller shaft will be carried by Parts and Accessories Division for service. The Part No. 677230X4 remains the same.

The 41-3/8" intermediate propeller shaft entered production with the following serial numbers: R16-71-004459, R16-004456, and R17-001909.

SERVICE EQUIPMENT

OAKITE COMPOSITION NO. 70 FOR EFFICIENT CAR WASHING

Mailed with this issue of the Service Bulletin is a catalog insert sheet describing the properties and use of Oakite Composition No. 70 and a directory of Oakite technical service representatives.

Oakite No. 70 is a powdered detergent, which when dissolved in cold water, permits quick, efficient, and economical car washing. On the basis of current prices, it requires only from two to three cents' worth of Oakite to wash the average car.

Washing the Average Car

First, hose the car thoroughly to remove loose dust, mud, etc. Preliminary hosing will also serve to cool it, an important item in preventing streaking.

Mix the washing material in a clean pail or other container and be sure that it is entirely dissolved.

Apply the solution with a sponge or soft cloth *from the bottom up*. This helps eliminate streaking. Apply solution to wheels and grille with a soft bristle brush to get into crevices and remove hidden deposits. Windows do not have to be squeegeed or chamoised.

Finish by rinsing the car thoroughly.

NOTE.--Always use cold water (as it comes from the tap) for all phases of car washing. Hot water will lead to streaking and may be harmful to some finishes.

Washing Waxed Surfaces

Operators should be very careful in washing waxed finishes, so as not to remove the wax application.

Before washing, hose off all loose dirt as thoroughly as possible. Keep car and washing equipment out of the sun so as not to soften the wax before washing.

Wash the car as above and immediately give cold water rinse.

Oakite Composition No. 70 can be ordered only through the local Oakite technical service representative listed in the enclosed directory. Oakite is stocked in 48 warehouses in principal cities throughout the country, making quick delivery possible.

Local representatives are available for instructions, demonstration, or to give other information regarding Oakite products on request to the nearest representatives listed in the enclosed directory.

NOTE.--*Export dealers may order from The Studebaker Export Corporation.*

Since 1909
the standard of
cleaning quality

OAKITE PRODUCTS, INC.

22 Thames Street, New York 6, N. Y.
In Canada: OAKITE PRODUCTS OF CANADA, LTD.

Originators
of Specialized
Cleaning Compounds
for Every Industry

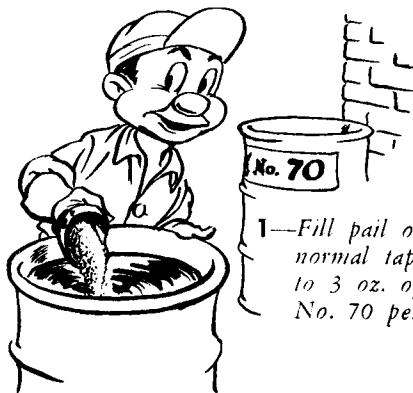
Faster, More Economical Washing of **Truck, Bus, Taxicab and Passenger Car Exteriors with** **OAKITE COMPOSITION NO. 70**

THE MATERIAL—Oakite Composition No. 70 is specially designed for quick, easy removal of road dirt, exhaust and oil films, grease, and bug juice from automotive exterior surfaces.

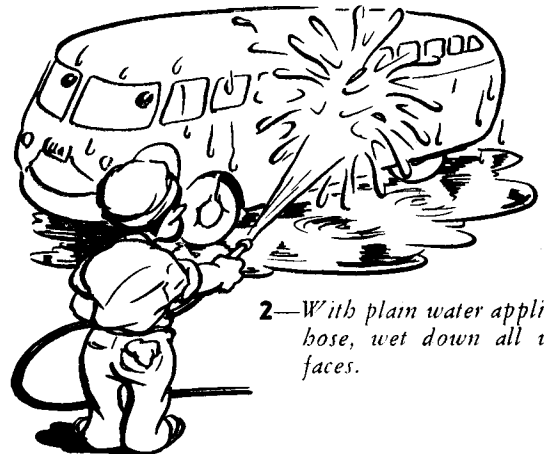
Oakite Composition No. 70 is mildly alkaline, with a pH comparable to that of a neutral soap, and does not attack painted, enameled or lacquered surfaces. It is readily soluble in cold water. Its solutions provide improved wetting and dirt-penetrating action. It clings to upright surfaces and rinses thoroughly, even when allowed to dry down on the surface. It leaves no streaks or spots after cleaning.

THE JOB—Oakite Composition No. 70 is widely specified in shops of truck, bus and taxi fleets and in garages and service stations. Its job benefits are: economy, speed, simplicity in exterior car washing operations. In addition, workmen like Oakite Composition No. 70 since its low alkalinity assures safe handling.

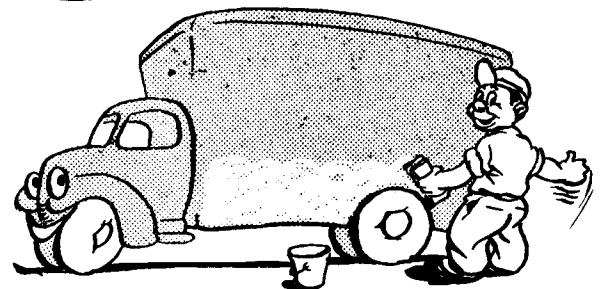
The following sketches detail the procedure for modern, scientific car, truck and bus washing with Oakite Composition No. 70.



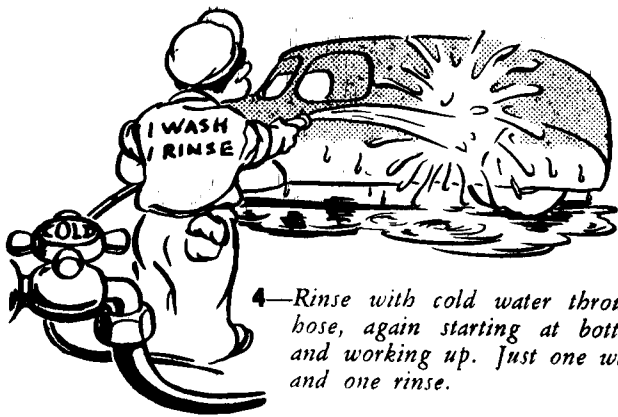
1—Fill pail or drum with water at normal tap temperature. Mix 1 to 3 oz. of Oakite Composition No. 70 per gal. water.



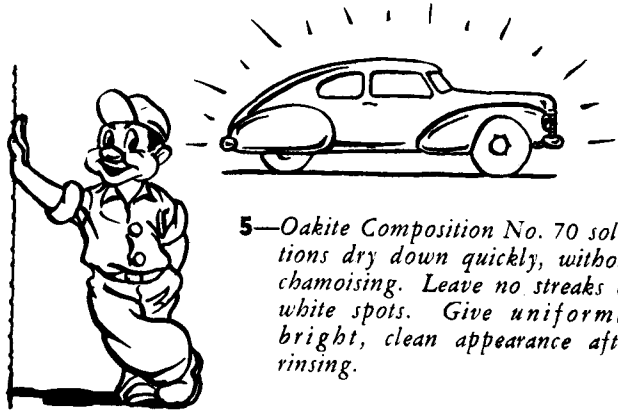
2—With plain water applied through hose, wet down all vehicle surfaces.



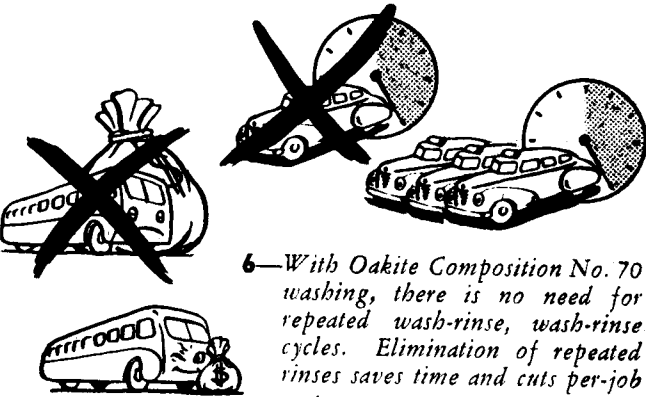
3—With sponge, cloth or soft brush, apply solution of Oakite Composition No. 70 to all surfaces, including glass. Work from bottom up, to avoid streaking . . . fenders and lower half of doors, sides of vehicle, hood, windshield and door glass, then over top.



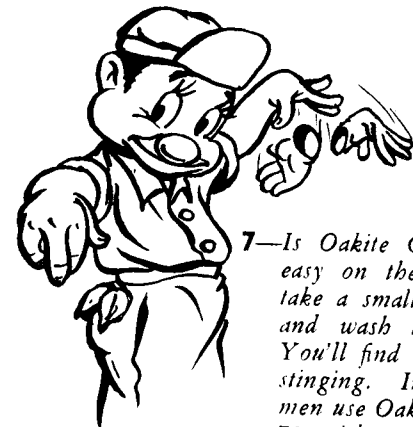
4—Rinse with cold water through hose, again starting at bottom and working up. Just one wash and one rinse.



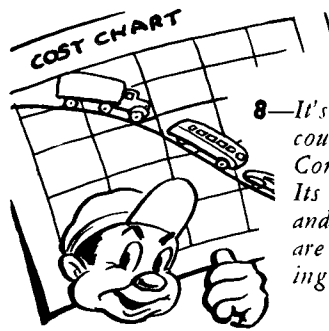
5—Oakite Composition No. 70 solutions dry down quickly, without chamoising. Leave no streaks or white spots. Give uniformly bright, clean appearance after rinsing.



6—With Oakite Composition No. 70 washing, there is no need for repeated wash-rinse, wash-rinse cycles. Elimination of repeated rinses saves time and cuts per-job costs.



7—Is Oakite Composition No. 70 easy on the hands? Try this: take a small amount of powder and wash hands under faucet. You'll find no presence of skin-stinging. In many cases workmen use Oakite Composition No. 70 without gloves.



8—It's the per-car washing cost that counts. And that's where Oakite Composition No. 70 counts too! Its use at small concentrations and its thorough cleaning action are your assurance of money-saving exterior washing.

Removal of Heavy Dirt Deposits. When unwaxed surfaces are extremely dirty or coated with thick oil or grease deposits, use Oakite Composition No. 70 at 6 oz. per gallon of water. Allow to soak for 5 to 10 minutes, then re-apply solution before rinsing.

Washing Simonized & Other Waxed Surfaces. Exercise extreme caution in washing these surfaces, even though Oakite Composition No. 70 is as safe as neutral soaps and is free-rinsing. Before actual washing, hose off all loose dirt as thoroughly as possible. As a further precaution, keep the equipment out of the sun so that wax will not tend to soften before cleaning. Use Oakite Composition No. 70 in cold water on all waxed surfaces, at maximum strength of 2 oz. per gal. water. Follow with thorough, prompt hose rinsing.

FREE OAKITE TECHNICAL ADVISORY SERVICE

For complete details of time-saving cleaning and deodorizing of bus, truck or taxi interiors, write to Oakite Products, Inc., 22 Thames Street, New York 6, N. Y. Helpful data on automotive cleaning, degreasing and descaling jobs are available in the Oakite 36-page booklet. Write for your free copy today!

There are more than 175 Oakite Technical Service Representatives located in principal cities of the United States and Canada. Their wide and successful experience in handling the work described in this Report—and other fleet shop jobs—is always at your disposal. Our Representative in your locality offers his services to you. Write to:

OAKITE PRODUCTS, INC.

22 Thames St., New York 6, N. Y.

In Canada

OAKITE PRODUCTS OF CANADA, LTD.

65 Front St., E., Toronto, Ont.

Technical Service Representatives Located in Toronto, Ont.; London, Ont.; Hamilton, Ont.; Montreal, Que.; Vancouver, B.C.